

# Showcase Homes, Inc.

## The Windsor

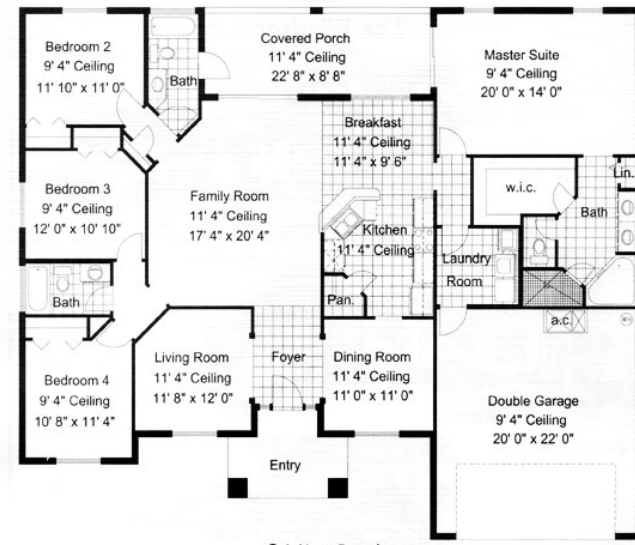


The Windsor, Presented by Showcase Homes, is available in these fine communities:



- 4 Bedroom/3 Bath split pool plan
- 2,232 sq. ft. of living area plus two car garage and covered lanai and entry for a total under roof building area of 2,991 sq. ft.
- In addition to our [Lifestyle Series Luxury Features](#), the above home in Addison Place and Grand Island Oaks also includes St. Augustine sod, irrigation system and upgraded landscape.
- Build on Your Lot includes approximately \$35,000.00 of allowances for permitting, clearing, fill material, well, impact fees, septic system, landscaping, walks and drives.

Grand Island Oaks Model Center open 10 a.m. to 5 p.m. Monday, Thursday, Friday, Saturday and noon to 5 p.m. Sunday. Closed Tuesday and Wednesday.  
 Sleepy Hollow Model Center open 10 a.m. to 5 p.m. Monday, Tuesday, Wednesday, Saturday and noon to 5 p.m. Sunday. Closed Thursday and Friday.



© L. Vance Browning



## Showcase Homes, Inc.

Sales prices subject to change without prior notice.  
 Broker participation invited. Price sheet dated June 26, 2007  
 Addison Place – 352-787-6655 – 866-802-8278  
 Sleepy Hollow – 352-787-6655 – 866-802-8278  
 Grand Island Oaks – 352-483-3344 – 888-903-6873  
[www.showcasehomesfl.com](http://www.showcasehomesfl.com)