

# Showcase Homes, Inc.

## The Sieana

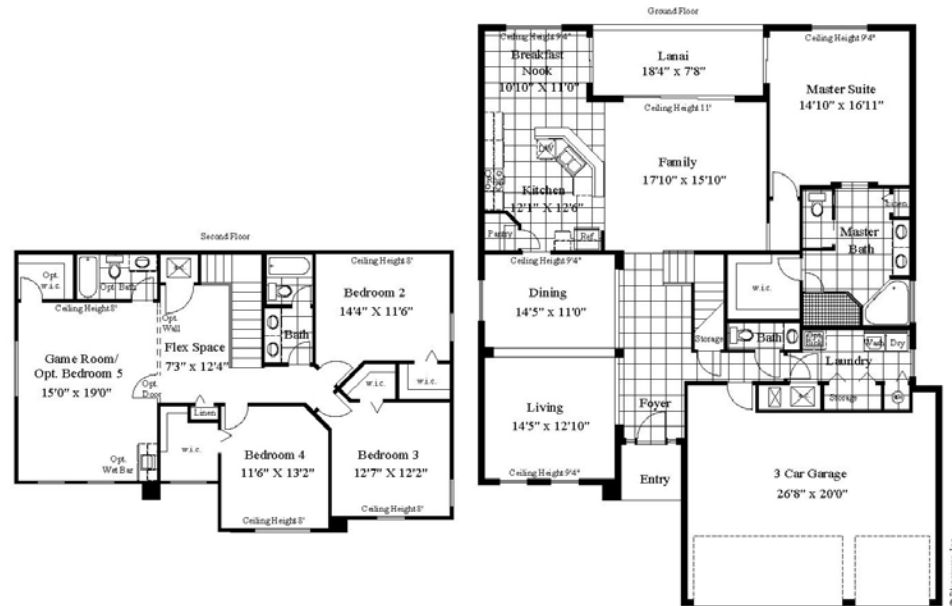


The Sieana, Presented by Showcase Homes, is available in these fine communities:



- Impressive two story, three car garage
- 4 bedroom/2 1/2 Bath, Game Room, Flex Area (Optional 5 bedroom/3 1/2 Bath)
- 3,231 sq. ft. of living area plus three car garage, covered Lanai and entry area for a total under roof building area of 4,019 sq. ft.
- Spacious Master Suite with ceramic tiled shower, garden tub, double bowl vanity, and large walk-in closet
- Kitchen has large corner pantry, and separate eat-in Breakfast Nook
- Living Room, Dining Rooms, separate Family Room, and inside Laundry Room
- Bedrooms have walk-in closets

Grand Island Oaks Model Center open 10 a.m. to 5 p.m. Monday, Thursday, Friday, Saturday and noon to 5 p.m. Sunday. Closed Tuesday and Wednesday.  
 Sleepy Hollow Model Center open 10 a.m. to 5 p.m. Monday, Tuesday, Wednesday, Saturday and noon to 5 p.m. Sunday. Closed Thursday and Friday.



SHOWCASE HOMES INC. #3087 (NEW PAVED FRONT ROAD)

Sales prices subject to change without prior notice.  
 Broker participation invited. Price sheet dated June 12, 2007  
 Addison Place— 352-787-6655 – 866-802-8278  
 Sleepy Hollow – 352-787-6655 – 866-802-8278  
 Grand Island Oaks – 352-483-3344 – 888-903-6873  
[www.showcasehomesfl.com](http://www.showcasehomesfl.com)